

E-27 MEDIUM BASE LAMPHOLDERS

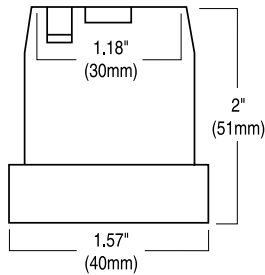
Series 502, 504 & 505 Porcelain Lampholders

- Unglazed porcelain phenolic E27 medium base lampholder with assorted brackets.
- Standard lead types are AWM 18 gauge 105°, & 125° plastic insulated wire. Green ground wire available on request.
- Standard screw shells are aluminum. Brass & nickel plated available at extra cost.
- Bracket types available are listed below.
- Standard packed 400 to a carton.

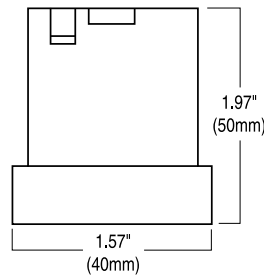
Non-stocked, Special Order, Call for details



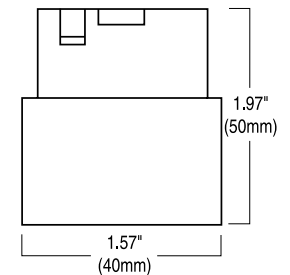
Series 502



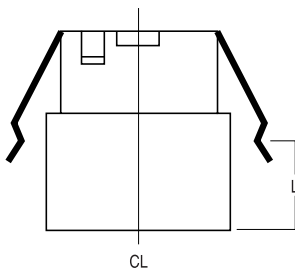
Series 504



Series 505

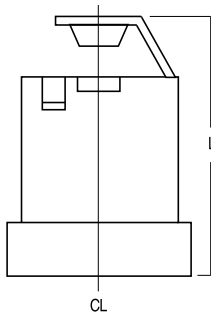


BRACKET TYPES FOR SERIES E-27 MEDIUM BASE

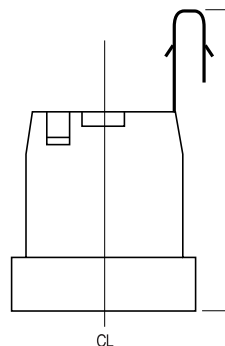


Bracket Type N

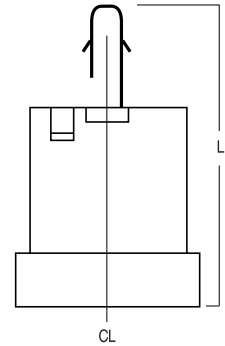
| Bracket Type | Number | L | B | Description |
|--------------|--------|------|---|------------------------------------|
| N | 102 | 30mm | - | Snap Spring Bracket |
| G | 104 | 80mm | - | Special Snap Bracket |
| H | 102 | 38mm | - | " |
| A | 101 | 38mm | - | 1/8"-27" Female Threaded Extrusion |



Bracket Type A



Bracket Type G



Bracket Type H